

Company	Vision Inc.
Representative	Kenichi Sano, Chairman and CEO Tokyo Stock Exchange Prime Market Stock Code: 9416
Contact	Shinichi Nakamoto, Director and CFO (Tel. +81 3 (5287) 3110)

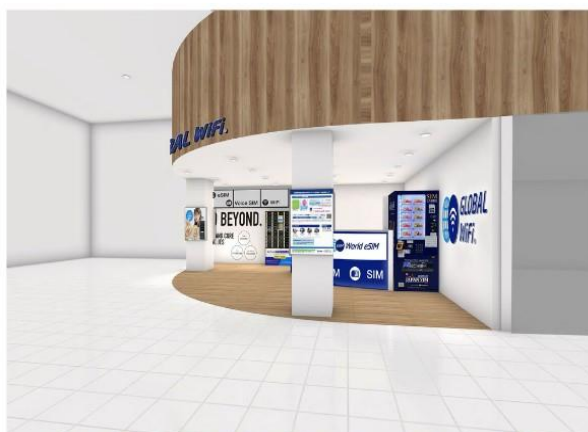
Vision Inc. has opened a second store on the same floor following the renewal of its “GLOBAL WiFi®” store in the Kansai International Airport Terminal 1 departure lobby.

Vision Inc. (Headquarters: Shinjuku-ku, Tokyo; President, Representative Director and COO: Kenji Ota, hereinafter Vision), which operates GLOBAL WiFi Business, Information and Communications Service Business, and Glamping and Tourism Business under the themes of “Connecting People, Connecting the World,” has opened another new store in the departure lobby of Kansai International Airport Terminal 1 following its renovation to delivery and accept applications for “GLOBAL WiFi®,” a Wi-Fi router rental service for overseas, and “NINJA WiFi®,” a Wi-Fi rental service for visitors to Japan.

Kansai International Airport Terminal 1 is wide from north to south, and the previous one-store system made it difficult for customers to find. Depending on the counter where they needed to check-in, customers had to walk a long distance. In addition to resolving these issues by having two-store system in the north and south, we believe that we will be able to provide more comfortable telecommunication-related services for the growing demand in overseas travel and tourism to Japan.



Terminal 1, 4th Departure Floor South Store



Terminal 1, 4th Departure Floor North Store

Kansai International Airport Terminal 1: Two-Store System with Renewal and New Opening

With these renewal opening and new opening, the number of “GLOBAL WiFi®” and “NINJA WiFi®” retail divisions throughout Kansai International Airport increased to eight (*1), making it the largest retail division providing telecommunication-related services within the airport.

(*1) Terminal 1: Departure lobby (2 divisions), Arrival lobby (5 divisions), Terminal 2 (1 division), total 8 divisions. We have renewed “Kansai International Airport 4th Floor Departure Lobby South Store” of the two divisions at the departure lobby, and have newly opened “Kansai International Airport 4th Floor Departure

Lobby North Store.”

Furthermore, we will open “GLOBAL WiFi®” and “NINJA WiFi®” stores at EXPO 2025 OSAKA, KANSAI, JAPAN, where many visitors are expected to use the airport.

Related release :

https://contents.xj-storage.jp/xcontents/AS80392/702cc754/5bd1/4d87/be34/1293651fe313/140120250220579546.pdf?_ga=2.78879511.2057723421.1741513642-1977010064.1696489254

■ Feature of the new store

- Strengthening sales of telecommunication-related products

In addition to renting Wi-Fi routers and selling SIM cards, we also rent and sell mobile batteries and other useful products for travel and business trips. When picking up rental items, customers can prepare everything they need at once before departure.

- Improved convenience

Smart Lockers “Smart Pickup” are available 24 hours a day to pick up rental items and apply for it on the spot. There are also vending machines for SIM cards and mobile accessories.

- Full flight support

Manned counter : 6:30am to 11:00pm (supports all departing and arriving flights)

By utilizing lockers and return boxes, it is possible to receive and return items 24 hours a day, even during unmanned hours.

■ Kansai International Airport Terminal 1, 4th Floor Departure Lobby South Store Details

- Opening date : Tuesday, March 18, 2025
- Location : Kansai International Airport Terminal 1, 4th floor,
1 Senshu-Kukonaka, Tajiri-cho, Sennan-gun, Osaka 549-0011, Japan
- Service : Reserved pickup / Same-day application / Returning
- Store operating hours : 6:30am to 11:00pm

■ Kansai International Airport Terminal 1, 4th Floor Departure Lobby North Store Details

- Opening date : Tuesday, March 18, 2025
- Location : Kansai International Airport Terminal 1, 4th floor,
1 Senshu-Kukokita, Izumisano City, Osaka 549-0001, Japan
- Service : Same-day application / Returning
- Store operating hours : 6:30am to 11:00pm

“GLOBAL WiFi®” and “NINJA WiFi®” will continue to expand touch points, including airports across the country, strive to improve our services and network quality, and expand available areas to provide a comfortable mobile Internet connection environment around the world.

■ Outline of the GLOBAL WiFi® service



- Service details : Mobile Wi-Fi router rental service for overseas use
 - Rental fees : As low as JPY300 per day
 - Service area : More than 200 countries and regions worldwide
 - Application methods : Website (<https://townwifi.com>), airport service counters, telephone call
 - Receiving / returning router devices : Possible in Japan through our service counters at 20 domestic airports, our facilities, home delivery services, or convenience stores (receiving only); possible overseas through our business locations
 - Provider : Vision Inc.
 - Receiving / returning airport counter
 - Application on the day of departure :
Narita airport [*1], Haneda airport, Kansai airport, Itami airport, Chubu airport, Fukuoka airport, Naha airport [*1], Oita airport [*2], Kagoshima airport [*6], New Chitose airport, Shizuoka airport [*7], Hiroshima airport [*7], Miyazaki airport, Sendai airport [*7], Kumamoto airport [*7], Kita-kyushu airport [*7], Miyako Shimojishima airport [*7], Komatsu airport [*7]
 - Receiving / returning :
Narita airport [*3], Haneda airport, Kansai airport, Itami airport, Chubu airport, Shizuoka airport [*7], Fukuoka airport, New Chitose airport, Komatsu airport, Naha airport [*4], Asahikawa airport [*2], Miyazaki airport, Niigata airport [*5], Sendai airport [*7], Hiroshima airport [*7], Oita airport [*2], Kagoshima airport [*6], Kita-kyushu airport [*7], Miyako Shimojishima airport [*7], Kumamoto airport [*7]
 - Facilities : SHIBUYA “CHIKAMICHI” [*8], JR Miyazaki station [*7], Tokyo Monorail Haneda Airport Terminal 3 Station [*7], GRANDUO Kamata [*7]
 - Overseas : Our business locations in Hawaii and South Korea
- [*1] This is a contract with “J WiFi & Mobile.”
- [*2] At the “Tourist Information Center.”
- [*3] At the “J WiFi & Mobile” counter.
- [*4] At the “J WiFi & Mobile” counter next to the Information Center in the arrival lobby on the 1st floor of the international terminal.
- [*5] At the “Niigata Kotsu Counter.”
- [*6] At the “Multifunctional Service Counter.”
- [*7] By unmanned pick-up locker “Smart Pickup” and “Return Box.”
- [*8] Only receiving is available.

■ Outline of the NINJA WiFi® service



- Services : Mobile Wi-Fi router rental service for Japan

- Fee : From 440 yen (tax included) per day
- How to apply : Website (<https://ninjawifi.com/en/>)
* Languages Supported : English, Chinese (Traditional Chinese), Japanese
- How to pick up and return the terminal : Airport counter (10 airports in Japan, and “Smart Pickup” Lockers installed at 7 of these airports), home delivery (all over Japan), tourist information centers and facilities (20 places), and Vision office (2 places)

■ Vision Inc. Company Profile



With the corporate philosophy of “To contribute to the global information and communications revolution” and slogan of “More vision, more success,” Vision provides services primarily in the information and communications field and makes decisions with a clear vision to help customers achieve greater success.

- Trade Name : Vision Inc.
- Prime Market of the Tokyo Stock Exchange (Code : 9416)
- Representative : President, Representative Director and COO Kenji Ota
- Headquarters : Shinjuku East Side Square 8F, 6-27-30 Shinjuku, Shinjuku-ku, Tokyo
160-0022, Japan
- Incorporated : December 2001 (Established June 1995)
- Capital : 2,653,000,000 yen
- Homepage : <https://www.vision-net.co.jp/en/>
- IR Information : https://www.vision-net.co.jp/en/ir_information.html/
- Businesses :
 1. GLOBAL WiFi
International / Domestic (Japan)
 2. Information and Communications Service
Fixed-line telecommunications service / Mobile communications service / Broadband service
Office automation equipment service / Internet media services
 3. Glamping and Tourism
 4. Others